



SANMI



In 1950 SANMI CORPORATION was established to manufacture mainly special granular alumina which is used for reclamation of transformer oil.

Since 1950, we have been continuing consistent exertion and study as a special manufacturer of treatment equipment and maintenance apparatus for various fluids such as oil, air and gas.

We have special devoted ourselves to the development of the oil purifiers and gas treatment units which contribute to the expansion of Japanese electric power industry.

HISTORY OF SANMI

- 1950 ~ "ALSO", Dry Air Generator provided to Electric Power Companies, Transformer manufacturer
- 1960 ~ Manufacturing Hot Line Oil Purifier
- 1970 ~ Manufacturing Vacuum Oil Purifier provided to power cable co & electrical maintenance co.
- 1980 ~ Provided to power generator co.
- 1990 ~ Provided to household & automobile industrial

MAIN PRODUCTS OF SANMI:

● ELECTRIC POWER APPARATUS

- VACUUM OIL PURIFIER
- "ALSO" TYPE HOT LINE OIL PURIFIER
- HIGH VACUUM PUMP SET
- DRY AIR GENERATOR
- AUTOMATIC DISSOLVED GAS ANALYZER
- DISSOLVED GAS MEASURING DEVICES
- HERMETIC TANK TYPE OIL PURIFIER (SF / SMF / DFL)
- SCF TYPE OIL FILTER
- EXPLOSIVE PROOF REFRIGERANT CHARGING MACHINE
- SF6 GAS TRANSFER UNIT / SF6 GAS VACUUM PUMP SET

● HOME ELECTRICAL APPARATUS

- MASS FLOW TYPE REFRIGERANT CHARGING MACHINE
- REFRIGERANT SUPPLY UNIT
- VACUUM OIL PURIFIER FOR REFRIGERANT OIL
- OIL CHARGING MACHINE
- OIL STORAGE TANK

ELECTRIC POWER APPARATUS



VACUUM OIL PURIFIER

Since 1950, Sanmi continuously offer economical and high performance single and two-stage high vacuum oil purifier for installation and maintenance of power transformer, circuit breaker and oil-filled electrical equipment.

It removes moisture and dissolved gasses from the oil under vacuum system, and solid particles by high performance filters.

Treatment capacity: 1,000L/h ~ 20,000L/h

- APPLICATION:** Transformer Insulating Oil
 High Flash Point Insulating Oil
 Cable Oil
 Silicon Oil
 Refrigerant Compressor Oil
 Vacuum Pump Oil
 X-Ray Insulating Oil



MODELS:



TRAILER MOUNTED TYPE
 MODEL: VSD-6000T



STANDARD TYPE
 MODEL: VSD-6000



BATCH TYPE



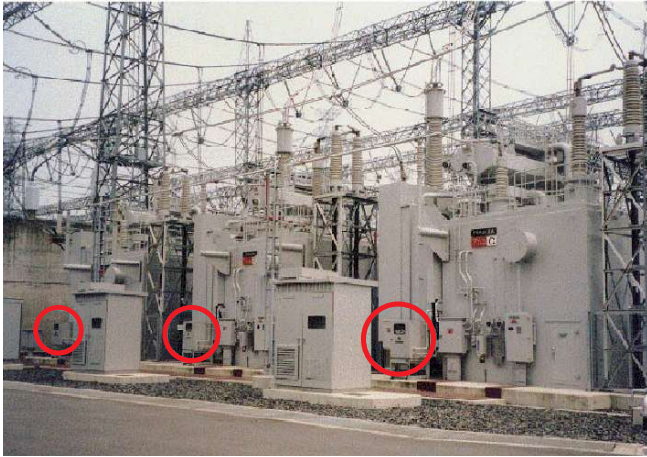
WITH ENCLOSURE
 MODEL: VSD-6000E

VACUUM OIL PURIFIER FOR OF CABLE OIL



MODEL: SVC-200CP

ELECTRIC POWER APPARATUS



“ALSO” TYPE HOT LINE OIL PURIFIER

This equipment is composed of a motor, oil pump, strainer, absorbing filter tank, gauge board, and switch panel placed in a steel sheet framed cubicle. LRT type is provided with an electric oil heater. Since the purifier has the oil inlet and the oil outlet at both sides of the cubicle, either one for easier piping can be connected to the tap changer, and the inlet and the outlet of the reverse side can be used as the oil discharge and the oil supply ports. A flow sight also is available near by the oil inlet and the oil outlet to observe the oil filtering condition.

TREATMENT CAPACITY: Standard type 10L/min
SALES PERFORMANCE: OVER 20,000 UNITS



BEFORE TREATMENT



AFTER TREATMENT



MODEL: LRS-210DH

VACUUM PUMP SET

This equipment is used for exhausting and dehumidifying a transformer before filling insulating oil in it. It is designed and manufactured for easy operation and maintenance. It is suitable for long time use at site. It is composed of a vacuum pump, motor, separator, gauges, valves and piping, which are assembled on a skid base.

Sanmi's vacuum pump set has three types SV, SVP and SVM type.



SVM TYPE



SVMRP TYPE

ELECTRIC POWER APPARATUS



DRY AIR GENERATOR

This heatless type dry air generator is suitable for supplying dry air at site and is able to be continuously operated without manual assistance by automatic recycling of air drying and regeneration of absorbent.

MODEL: SD-010S
SD-020S
SD-030S

SCF TYPE OIL PURIFIER (COALESCER METHOD)

This equipment efficiently removes moisture and solid impurities from turbine oil, compressor oil, pressure oil, lamp oil, fuel oil, etc., by means of a coalescer element made of special glass wool.



SCF TYPE

VST TYPE

VACUUM IMPREGNATION EQUIPMENT FOR MEDICAL

This equipment removes dissolved moisture and gas from the oil under vacuum system. It is used for medical manufacturers.



ELECTRIC POWER APPARATUS



SF6 GAS VACUUM PUMP UNIT

It evacuates and filling gas to gas filling apparatus in new installation and maintenance. 3 systems capable for same time operating.

Model: SVP-1500F



SF6 GAS TRANSFER UNIT

Suitable for maintenance and inspection of SF6 Gas Insulated Substations (GIS). It recovers SF6 gas from a charging machine and then stores, refines and refilling.

Model: SFL TYPE (Two in one type)



Model: SFL TYPE
(Separation type)

Model: SFL TYPE
(Separation type)



ELECTRIC POWER APPARATUS



SG0A TYPE

AUTOMATIC DISSOLVED GAS ANALYZER

It analyzes 11 fault dissolved gases: H₂, O₂, N₂, CO, CO₂, CH₄, C₂H₆, C₂H₄, C₂H₂, C₃H₈, C₃H₆ from transformer, OF cable oil to predict faults.



Gas Extractor



Gas Chromatograph



Data Processor

DISSOLVED GAS MEASURING DEVICES

It measures amount of dissolved gases in transformer oil and cable oil. Compact and light design suitable for on-site and workstations.



SGM-200P

HERMETIC TANK TYPE OIL FILTER

It removes carbon, dust and substance particles from insulating oil. Hermetic type design to avoid oil leakage, capable of unattended operation.

There are 3 types as: SF, SMF & DFL.



SF Type



SMF Type



DFL Type

ELECTRIC POWER APPARATUS



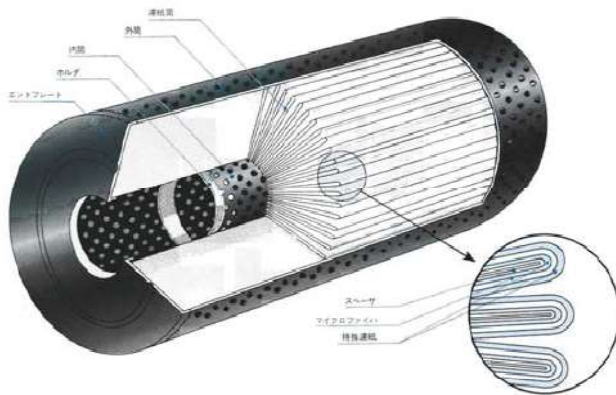
SKN TYPE PORTABLE OIL TESTER

It can be carried to power stations, substations, and factories to measure dielectric breakdown strength.



OIL ACID VALUE MEASURING SET

It easily measures acid value of insulating oil. With progress of deterioration of the insulating oil, its surface tension becomes lower, moisture becomes readily soluble in the oil and resultantly the dielectric breakdown voltage and specific resistance becomes lower. In the advanced stage of deterioration, the sludge is formed which hinders cooling of the oil and causes some trouble of the equipment. So that it is important point for the maintenance of insulating oil to measure its acid value periodically and keep it within a criterion.



SD SERIES CARTRIDGE FILTER

SD series filter element are pleat type filters composed of glass fiber and special filter paper. As they are extremely superior in removal property of micro-particles and have high stability of filtering performance, they can remove carbon, dust, dirt contained especially in insulation oil cleanly. For this reason, they are new filter elements best suited for hot line oil purifiers of On Load Tap Changing transformers. Besides, they are applicable to a large variety of oils such as lubricating oil, hydraulic oil etc.



SC ENVIRONMENT-FRIENDLY
SILICA GEL BREATHER



BREATHER
REGENERATOR

SC ENVIRONMENT-FRIENDLY SILICA GEL BREATHER

The SC Type Silicagel Breather features regeneratable after absorbing moisture from air. The cartridge cell can be replaced easily without using special tool. Owing to the lost mold the exchange work is possible even under rain. The body of breather is transparent type, therefore the discoloration of the silica gel is visible. The silica gel can be regenerated by putting the whole cartridge cell into a special regenerator.

HOME ELECTRICAL APPARATUS



SRFM TYPE

REFRIGERANT CHARGING MACHINE

This refrigerant charging unit consists of a booster pump, mass flow-meter, control board and a charging gun. It is designed to fill the works continuously with refrigerant that is supplied and a charging gun. It is designed to fill the works continuously with refrigerant that is supplied in the form of pressurized liquid.

Applicable Refrigerant: R32 ,R22、 R134a, R404a, R407c, R410a, R600a, CO2

Measuring Method: Mass-Flow Meter Type

Charging range: 30g - 50Kg

Charging speed: 20g - 200g/sec

*(Depend on type of refrigerant and speed, exclusive SRP type Refrigerant Supply Unit will be required.)

Charging accuracy: ±5cc

Outside Dimension: 800 (W) x 800(D) x 1600(H)mm



TANK OF STORAGE

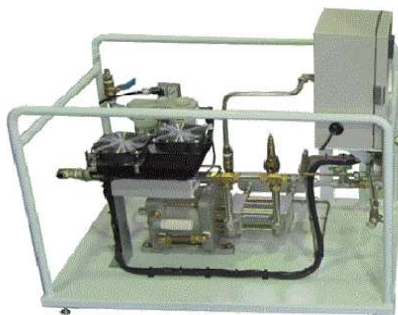


CHARGING GUN



AT A FACTORY

REFRIGERANT SUPPLY UNIT



SRP TYPE

Specification

Applicable Refrigerant R32, R410a, CO2, R22, R404a, R407c, R134a, R600a etc.

Capacity Max. 200g/sec

Dimensions 700W×1100D×1100Hmm



CO2 REFRIGERANT CHARGING MACHINE

HOME ELECTRICAL APPARATUS



VACUUM REFRIGERANT OIL purifier

It remove solid particles, gasses and moisture in oil to improve the quality of the oil.

It treats :mineral oil,

PAG,

Ester (POE),

Ether (PVE) oil and etc.

OIL CHARGING UNIT

It charges fixed amount of refrigerant oil filtered by the refrigeration vacuum oil purifier.



OIL STORAGE TANK

It stores large amount of refrigerant oil filtered by the refrigeration vacuum oil purifier, and continuously supply with oil to charging machine.

REPRESENTATIVE PRODUCTS



SR TYPE

VACUUM PUMP OF SHINKO

- Oil-Sealed Rotary Vacuum Pump
- Watering Vacuum Pump
- Mechanical Booster Pump



JAPANESE BRAND OIL

- JX Nippon Oil & Energy Corporation
- Insulating Oil (JIS CLASS, ASTM & IEC CLASS)
- OF Cable Oil
- Vacuum Pump Oil (Matsumura)

KARL FISCHER MOISTURE TITRATOR

Applicable for measuring Ester oil, Ether oil, Insulation oil, Refrigerant oil, Silicon oil etc.
Range: 10ug - 100mg H₂O
Sensitivity: 0.1ug H₂O



Printer: IDP-100

MKC-710B

DEW POINT METER

Dew Point Meter (Off Line)
Dew Point Meter (On Line)
Portable Dew Point Meter (ANALOGUE & DIGITAL Type)



Ball Screw

Precision ball screws
Rolled ball screws



Riveting machines

Servo Riveting machine
Pneumatic Riveting Machine



Heated hose

Heated hose
Pressure-resistant hoses,
Ribbon and jacket heaters for heated hose



AUTHORIZED SUPPLIER IN INDONESIA



PT MULYA JATRA
JL KYAI NAWAWI NO.51 WARU, SIDOARJO
EAST JAVA, INDONESIA
TEL : + 62 31-8666402
WEBSITE : <https://mulyajatra.com>
EMAIL : info@mulyajatra.com

SANMI

株式会社三美テックス
Sanmi Corporation

CONTACT ADDRESS:
2-14-3 SHIMOMARUKO, OHTA-KU, TOKYO, JAPAN
ZIP:146-0092
TEL: +81-3-5482-2101
FAX:+81-3-5482-2432
WEB-SITE: <http://www.sanm.i.co.jp>
E-MAIL: sales@sanmi.co.jp

SANMI CORPORATION

2-14-3, SHIMOMARUKO,
OHTA-KU, TOKYO,
JAPAN, 146-0092

TEL: 81-3-5482-2101
FAX: 81-3-5482-2432

July 19, 2022

CERTIFICATE OF AUTHORIZATION

We, SANMI CORPORATION, a company duly organized and existing under the law of JAPAN having its principal office at 2-14-3, Shimomaruko, Ohta-ku, Tokyo 146-0092, Japan authorized :

Company Name : PT.MULYA JATRA
Address: JL.Kyai Nawawi 51, Wadung Asri
Sidoarjo 60400, East Java, Indonesia

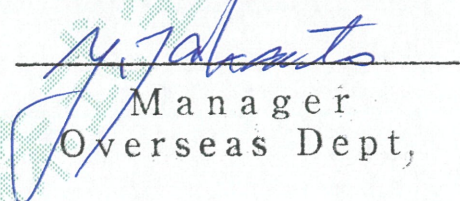
To supply SANMI CORPORATION equipment and spare parts to PT PLN in Indonesia

We shall guarantee the products quality and provide technical support in operation and after service.

The Validity of the Certificate is till 31, July 2023

Thank you very much with kind regards

SANMI CORPORATION



Manager
Overseas Dept,